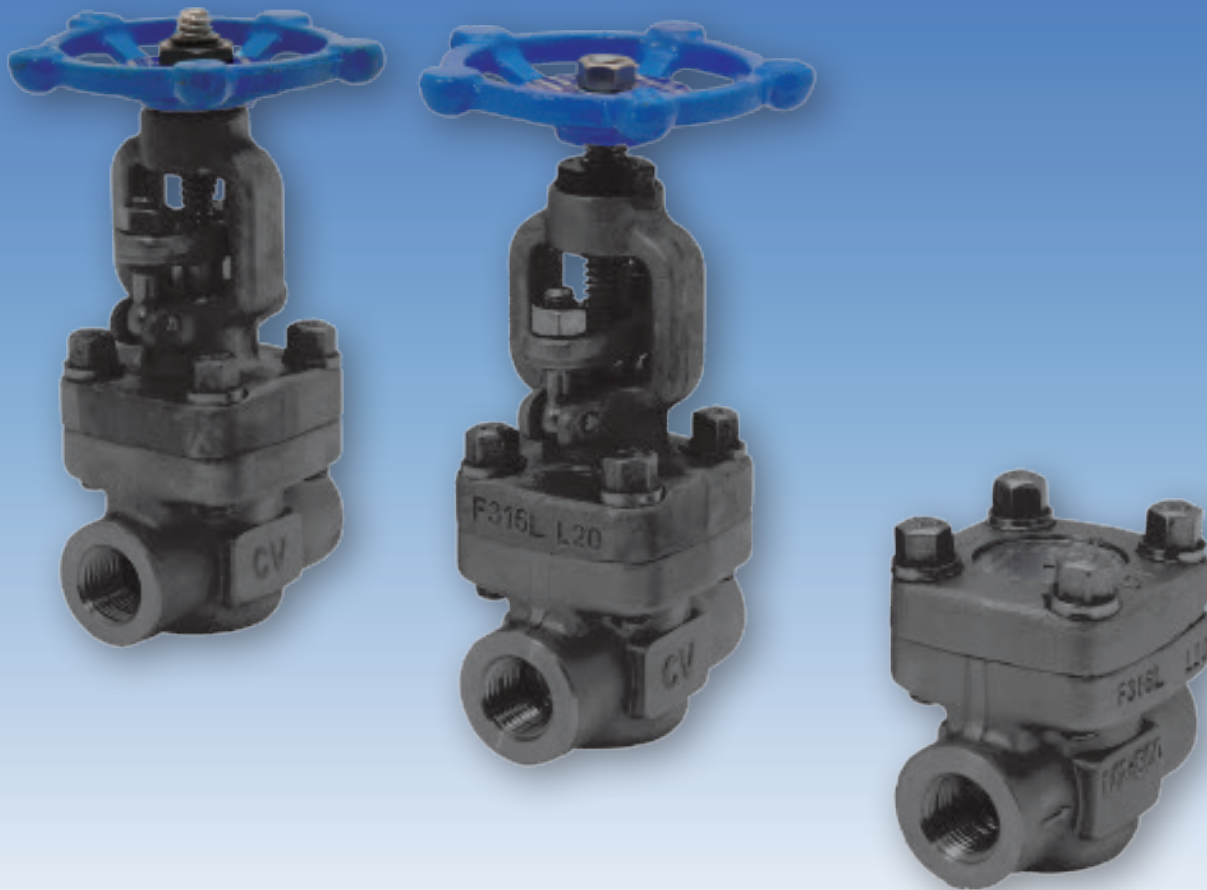


# Chicago Valves & Controls



**CLASS 800**

**FORGED STEEL & STAINLESS**

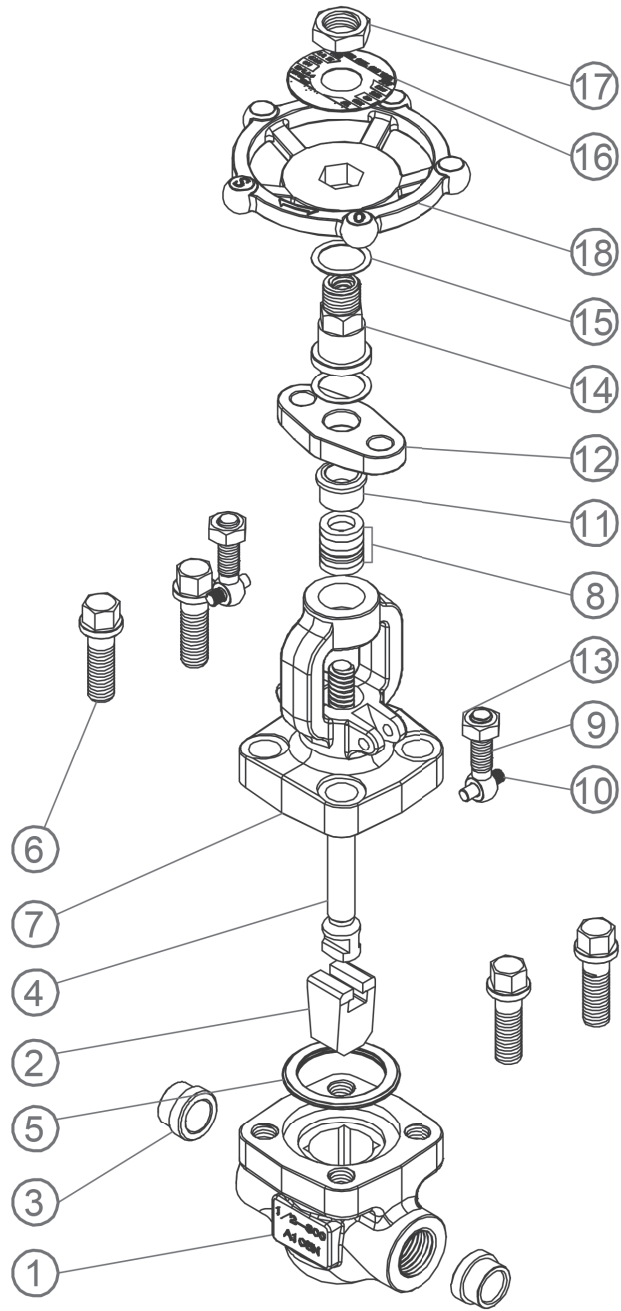
**STEEL GATE GLOBE & CHECK**

# GATE VALVE

CLASS 800

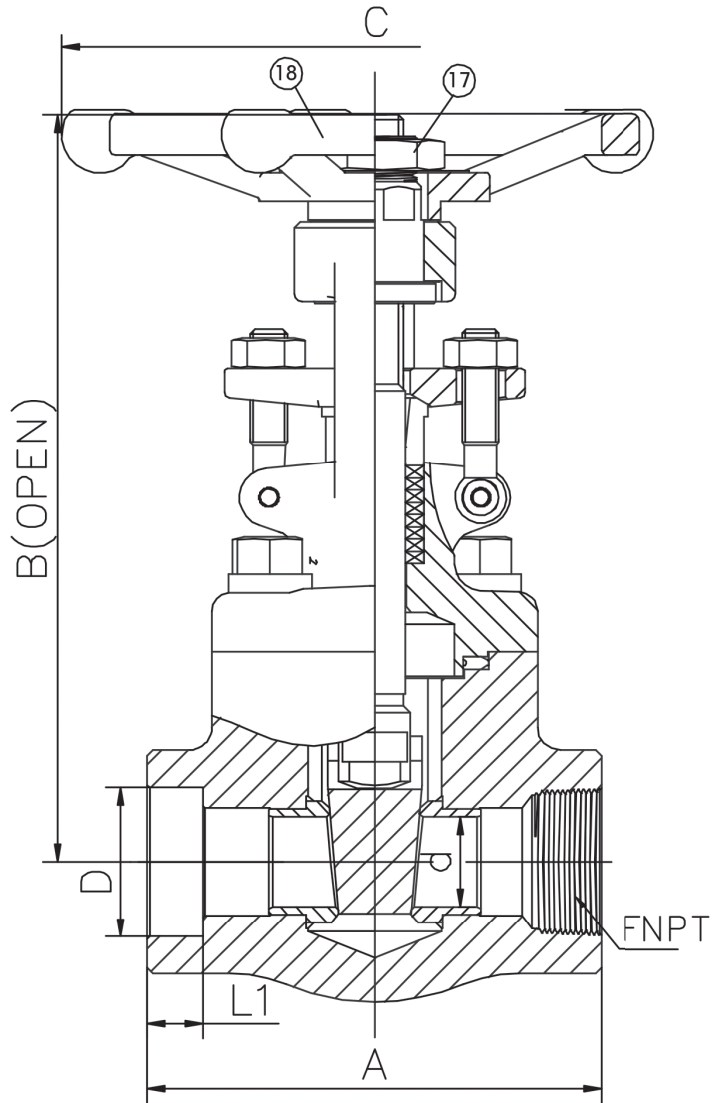
BOLTED BONNET  
 FORGED STEEL  
 316L STAINLESS STEEL  
 RISING STEM  
 NACE MR-0175  
 OPTION-API 624

Class 800



## PARTS & MATERIAL

PART NO.	PART NAME	QTY.	MATERIAL	
1	Body	1	A105N	A182 F316L
2	Disc	1	A276 420	A182 F316L
3	Seat Ring	2	A276 410+STL	A276 316L+STL
4	Stem	1	A276 410	A182 F316L
5	Gasket	1	304+Graphite	316L+Graphite
6	Bonnet Bolt	4	A193 B7	A193 B8M
7	Bonnet	1	A105N	A182 F316L
8	Packing	1 Group	Graphite	
9	Gland Bolt	2	A193 B7	A193 B8M
10	Gland Studs	2	A276 304	
11	Packing Flange	1	A276 420	A182 F316L
12	Gland Flange	1	A105N	A182 F316L
13	Nut	2	A194 2H	A194 8M
14	Stem Nut	1	A276 410	
15	Washer	1	A276 410	
16	Nameplate	1	Aluminum	
17	Hand Wheel Nut	1	A108 1020	
18	Hand Wheel	1	A197	



SIZE	CV	WEIGHT (LBS)
1/4"	1.8	4.63
3/8"	3.1	4.63
1/2"	5.3	4.41
3/4"	8.2	4.85
1"	16.0	7.72
1 1/4"	31.1	12.12
1 1/2"	45.3	14.11
2"	71.8	20.50

**DIMENSIONS (INCHES)**

SIZE	A	d	D	L1	FNPT	B	C
1/4"	3.11	0.30	0.56	0.39	1/4"	6.18	3.94
3/8"	3.11	0.39	0.69	0.39	3/8"	6.18	3.94
1/2"	3.11	0.51	0.86	0.39	1/2"	6.18	3.94
3/4"	3.62	0.51	1.07	0.51	3/4"	6.18	3.94
1"	4.37	0.71	1.33	0.51	1"	7.28	4.72
1 1/4"	4.72	0.94	1.68	0.51	1 1/4"	8.90	6.30
1 1/2"	4.72	1.14	1.92	0.51	1 1/2"	9.49	6.30
2"	5.51	1.44	2.41	0.65	2"	10.75	8.66

**APPLICABLE STANDARDS**

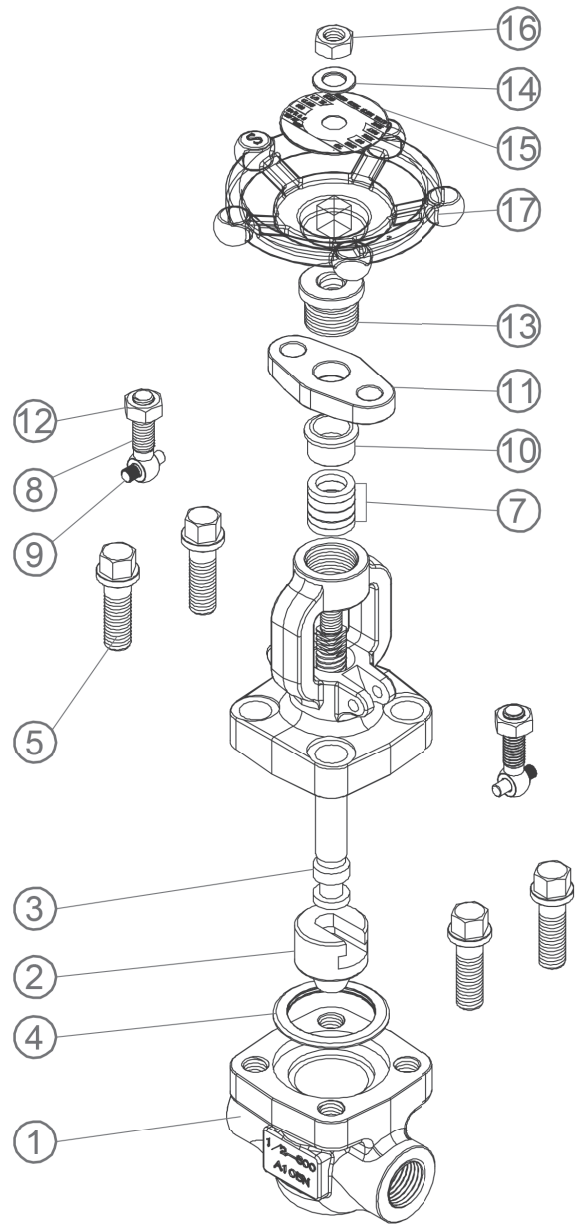
BASIC DESIGN	API 602
THREADED ENDS	ANSI B1.20.1
SOCKET WELD	ANSI B16.11
TEST	API 598

# GLOBE VALVE

## CLASS 800

BOLTED BONNET  
 RISING STEM  
 NACE MR 0175  
 OPTION-API 624

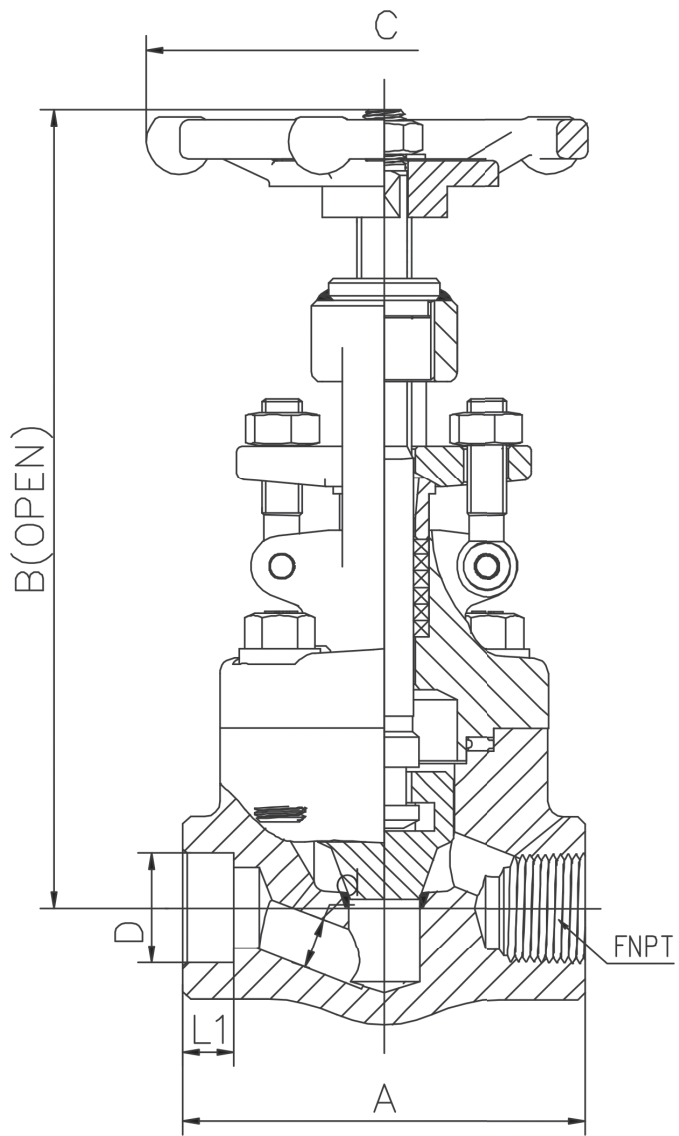
Class 800



### PARTS & MATERIAL

PART NO.	PART NAME	QTY.	MATERIAL	
1	Body	1	A105N+STL	A182 F316L+STL
2	Disc	1	A276 420	A276 316L
3	Stem	1	A276 410	A182 F316L
4	Gasket	1	304+Graphite	316L+Graphite
5	Bonnet Bolt	4	A193 B7	A193 B8M
6	Bonnet	1	A105N	A182 F316L
7	Packing	1 Group	Graphite	
8	Gland Bolt	2	A193 B7	A193 B8M
9	Gland Studs	2	A276 304	
10	Packing Flange	1	A276 420	A182 F316L
11	Gland Flange	1	A105N	A182 F304
12	Nut	2	A194 2H	A194 8M
13	Stem Nut	1	A276 410	
14	Washer	1	A276 410	
15	Nameplate	1	Aluminum	
16	Hand Wheel Nut	1	A194 2H	A194 8M
17	Hand Wheel	1	A197	

Class 800



SIZE	CV	WEIGHT (LBS)
1/4"	0.7	4.85
3/8"	0.7	4.85
1/2"	1.3	4.63
3/4"	2.6	5.07
1"	6.4	8.16
1 1/4"	11.6	12.79
1 1/2"	17.0	16.53
2"	30.9	22.49

**DIMENSIONS (INCHES)**

SIZE	A	d	D	L1	FNPT	B	C
1/4"	3.11	0.27	0.56	0.39	1/4"	6.34	3.94
3/8"	3.11	0.27	0.69	0.39	3/8"	6.34	3.94
1/2"	3.11	0.37	0.86	0.39	1/2"	6.34	3.94
3/4"	3.62	0.49	1.07	0.51	3/4"	6.34	3.94
1"	4.37	0.69	1.33	0.51	1"	7.60	4.72
1 1/4"	4.72	0.93	1.68	0.51	1 1/4"	9.06	6.30
1 1/2"	5.98	1.12	1.92	0.51	1 1/2"	9.76	6.30
2"	6.77	1.44	2.41	0.65	2"	11.10	8.66

**APPLICABLE STANDARDS**

BASIC DESIGN	API 602
THREADED ENDS	ANSI B1.20.1
SOCKET WELD	ANSI B16.11
TEST	API 598

# CHECK VALVES

## CLASS 800

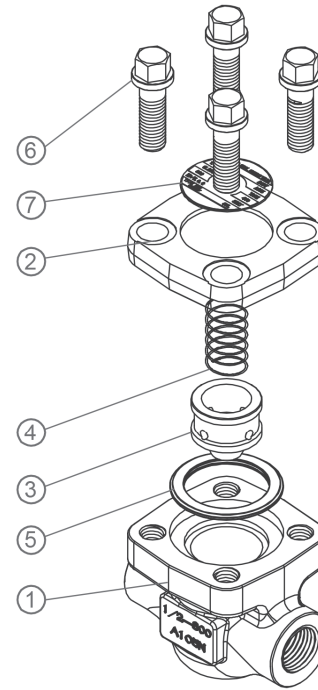
PISTON & CHECKS  
BOLTED BONNET  
RISING STEM  
NACE MR 0175

Class 800

### PISTON CHECK VALVE

#### PARTS & MATERIAL

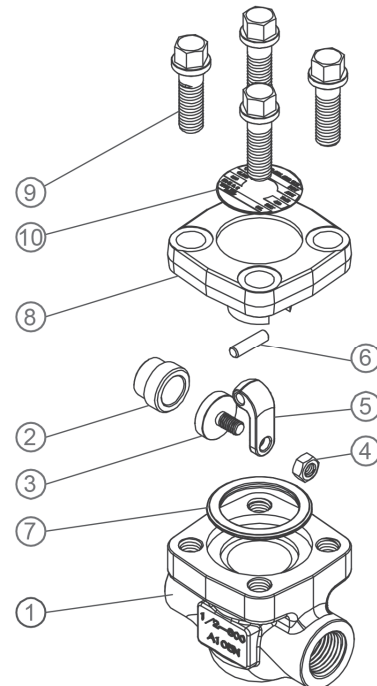
PART NO.	PART NAME	QTY.	MATERIAL	
1	Body	1	A105N+STL	A182 F316L+STL
2	Bonnet	1	A105N	A182 F316L
3	Disc	1	A276 420	A276 316L
4	Spring	1	316 SS	
5	Gasket	1	304+Graphite	316L+Graphite
6	Bonnet Bolt	4	A193 B7	A193 B8M
7	Nameplate	1	Aluminum	



### SWING CHECK VALVE

#### PARTS & MATERIAL

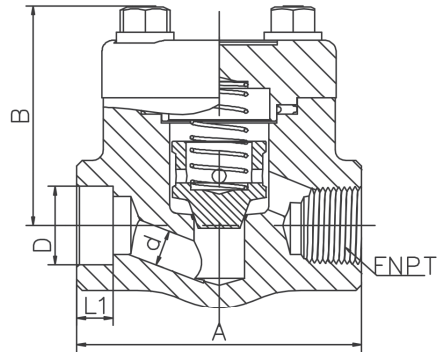
PART NO.	PART NAME	QTY.	MATERIAL	
1	Body	1	A105N	A182 F316L
2	Seat Ring	1	A276 410+STL	A276 316L+STL
3	Disc	1	A276 420	A276 316L
4	Nut	1	A194 8	A194 8M
5	Swing Arm	1	A351 CF 8	A182 F316L
6	Pin	1	A276 316	
7	Gasket	1	304+Graphite	316L+Graphite
8	Bonnet	1	A105N	A182 F316L
9	Bonnet Bolt	4	A193 B7	A193 B8M
10	Nameplate	1	Aluminum	



## PISTON CHECK VALVE

### APPLICABLE STANDARDS

BASIC DESIGN	API 602
THREADED ENDS	ANSI B1.20.1
SOCKET WELD	ANSI B16.11
TEST	API 598



### DIMENSIONS (INCHES)

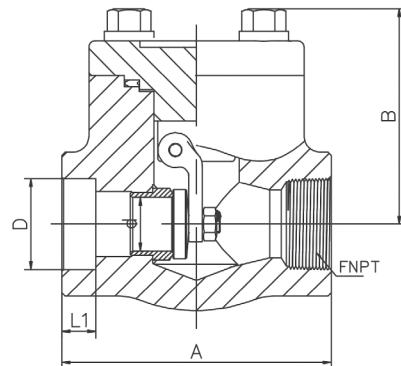
SIZE	A	d	D	L1	FNPT	B
1/4"	3.11	0.27	0.56	0.39	1/4"	2.28
3/8"	3.11	0.27	0.69	0.39	3/8"	2.28
1/2"	3.11	0.37	0.86	0.39	1/2"	2.28
3/4"	3.62	0.49	1.07	0.51	3/4"	2.28
1"	4.37	0.69	1.33	0.51	1"	2.95
1 1/4"	4.72	0.93	1.68	0.51	1 1/4"	3.35
1 1/2"	5.98	1.12	1.92	0.51	1 1/2"	3.82
2"	6.77	1.44	2.41	0.65	2"	4.25

SIZE	CV	WEIGHT (LBS)
1/4"	0.6	3.09
3/8"	0.6	3.09
1/2"	1.2	3.09
3/4"	2.1	3.31
1"	4.1	5.95
1 1/4"	7.4	8.59
1 1/2"	10.9	11.68
2"	19.5	17.20

## SWING CHECK VALVE

### APPLICABLE STANDARDS

BASIC DESIGN	API 602
THREADED ENDS	ANSI B1.20.1
SOCKET WELD	ANSI B16.11
TEST	API 598

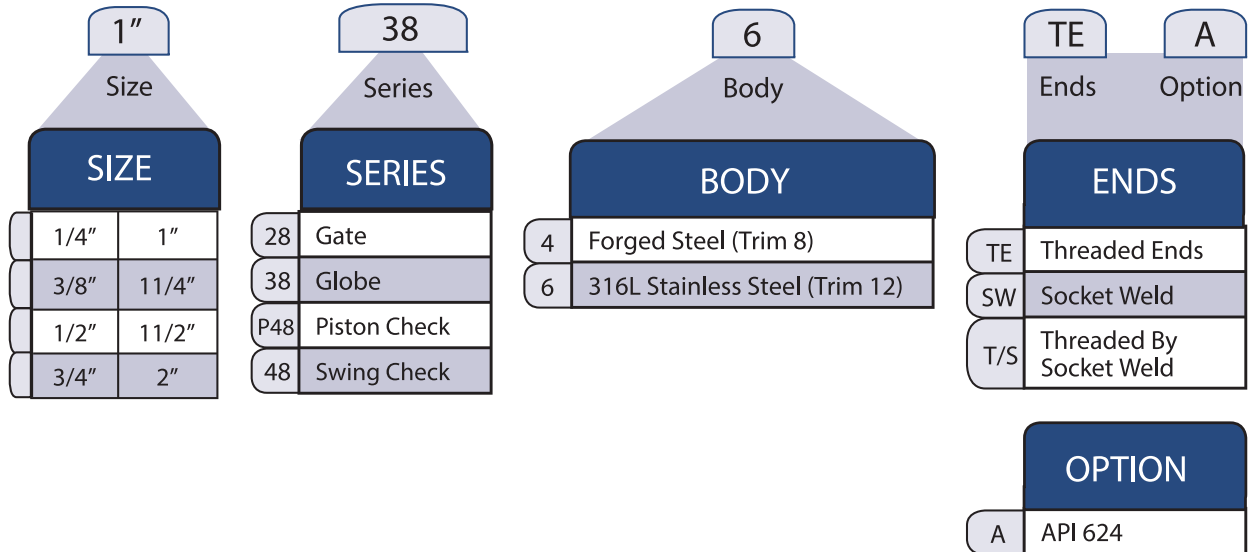


### DIMENSIONS (INCHES)

SIZE	A	d	D	L1	FNPT	B
1/4"	3.11	0.30	0.56	0.39	1/4"	2.28
3/8"	3.11	0.39	0.69	0.39	3/8"	2.28
1/2"	3.11	0.51	0.86	0.39	1/2"	2.28
3/4"	3.62	0.51	1.07	0.51	3/4"	2.28
1"	4.37	0.71	1.33	0.51	1"	2.95
1 1/4"	4.72	0.94	1.68	0.51	1 1/4"	3.66
1 1/2"	4.72	1.14	1.92	0.51	1 1/2"	3.70
2"	5.51	1.44	2.41	0.65	2"	4.21

SIZE	CV	WEIGHT (LBS)
1/4"	2.3	3.09
3/8"	4.1	3.09
1/2"	6.9	2.86
3/4"	6.9	3.31
1"	13.2	5.95
1 1/4"	23.4	8.16
1 1/2"	34.2	9.70
2"	50.4	14.33

# HOW TO ORDER



**Chicago Valves**  
& Controls



Toll-Free (833) 831-2312

Local (312) 637-3557

Fax: (312) 637-3543

E-Mail: [sales@chicagovalves.com](mailto:sales@chicagovalves.com)

[www.chicagovalves.com](http://www.chicagovalves.com)

885 Cambridge Dr.

Elk Grove Village, Illinois 60007 U.S.A.