

(HOT) High Temperature/Pressure Clamp End Ball Valve



**Designed for: High Pressure & Temperature Applications
such as steam & thermal fluid**

Great for Cooking Oils

Features:

ISO 5211 Mount Pad

Lockable Handle

Full Port Design

Live Loaded Stem

25% Carbon + 75% PTFE

Higher Temperatures

Higher Cycle Life than PTFE or RTFE

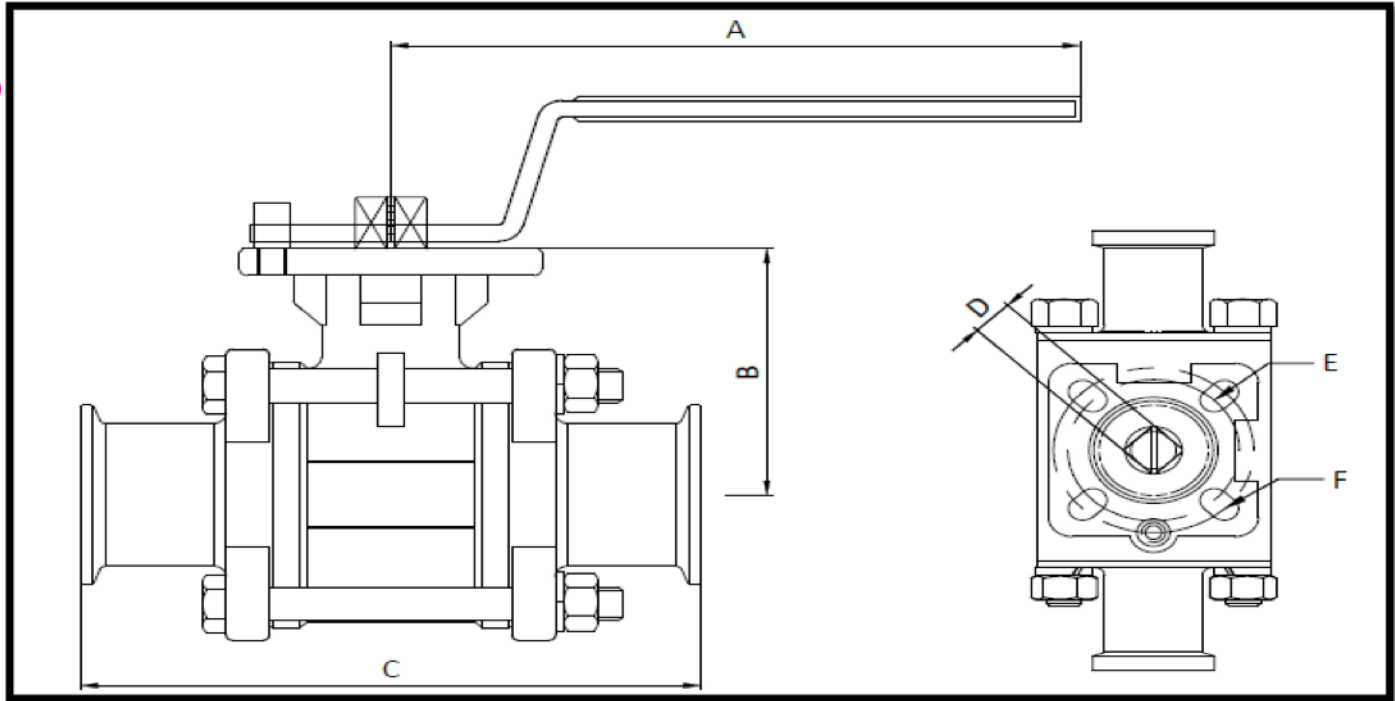
Cavity Filled Seat/ Three Piece Design for Field Service

www.sanitarysolutions.com

Sanitary Solutions Inc. 1-888-909-3569 or 1-855-640-7871

Prices are subject to change without notice; please call before you quote

(HOT) High Temperature/Pressure Clamp End Ball Valve Dimensions



<u>Size</u>	<u>A</u>	<u>B</u>	<u>C</u>	<u>D</u>	<u>E</u>	<u>F</u>	<u>CV</u>	<u>Wt.</u>
1.5"	7.165	2.700	5.600	0.551	F05	F07	192	5 lbs.
2"	7.165	3.100	6.400	0.551	F05	F07	434	7 lbs.

Note: Sanitary Solutions High Temperature Pressure Ball Valve Part Number Example:

SSEBVC-CT-SIZE-316L

www.sanitarysolutions.com

Sanitary Solutions Inc. 1-888-909-3569 or 1-855-640-7871

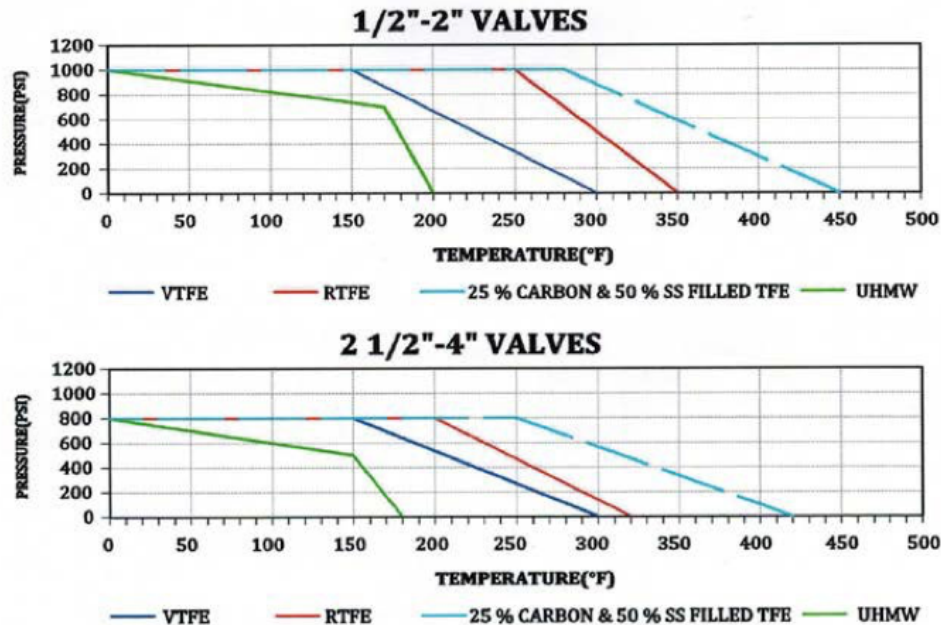
Prices are subject to change without notice; please call before you quote

(HOT) High Temperature Ball Valve Seat Materials Chart

Seat Materials for Ball Valves

Description	Material	Applications
Virgin PTFE	Virgin Polytetrafluoroethylene	100% PTFE ONE standard seat material. Ideal for most of the sanitary solutions. Specified for applications that require a low-efficient of friction.
	(Food Grade Material)	
RTFE	15% Glass Reinforced Tetrafluoroethylene	15% Glass Filled + 85% PTFE Higher temperature and pressure rating compare to PTFE. Specified for applications that require a highre cycle life than PTFE.
25% carbon PTFE	25% Carbon Reinforced Tetrafluoroethylene	25% Carbon Filled + 75% PTFE Specified for high temperature and pressure applications. Higher cycle life than RTFE. Ideal for steam and thermal fluid applications.
Stainless Steel PTFE	50% Stainless Steel Filled Tetrafluoroethylene	50% Stainless Steel + 50% PTFE Specified for higher temperature and pressure applications in a sanitary process.
	(Food Grade Material)	
UHMW	Ultra-high Molecular Weight Polyethylene	Specified for the low modulus of abrasion and minimal property degradation whne exposed to moderate levels of radiation. Ideal for where fluorocarbons are not acceptable.
	(Food Grade Material)	

Pressure Temperature Charts



Note: 25% Carbon + 75% PTFE—Higher Temperatures/Pressure Applications & a higher cycle life than PTFE or RTFE

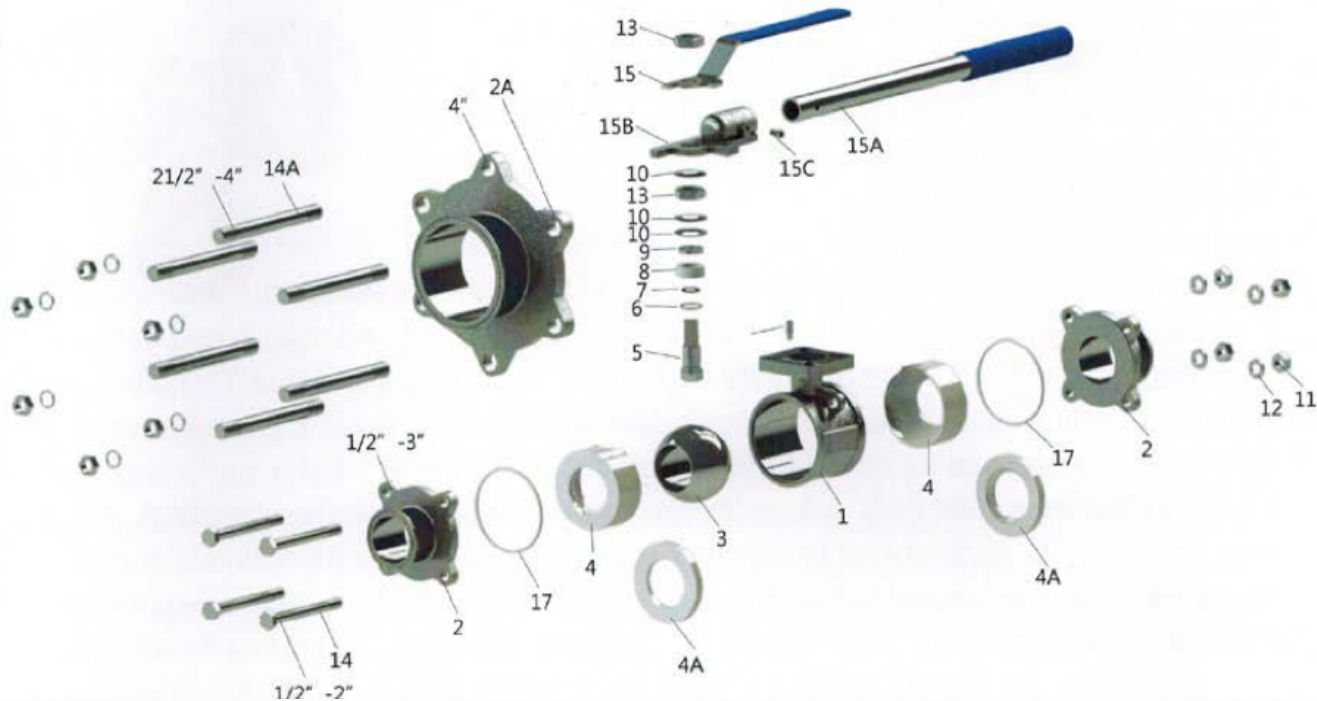
www.sanitarsolutions.com

Sanitary Solutions Inc. 1-888-909-3569 or 1-855-640-7871

Prices are subject to change without notice; please call before you quote

(HOT) High Temperature Ball Valve Seat Materials Chart

Material List



Item	Description	Material	Quantity			
			1/2" - 2"	2 1/2"	3"	4"
1	body	CF8M	1	1	1	1
2	end (4-bolt)	CF8M	2	2	2	n/a
2A	end (6-bolt)	CF8M	n/a	n/a	n/a	2
3	ball	CF8M	1	1	1	1
4	seat (encapsulated)	V, G, C, S, U	2	2	2	2
4A	seat (non-encapsulated)	V, G, C, S, U	2	2	2	2
5	stem	316	1	1	1	1
6	thrust washer	V, G, C, S, U	1	1	1	1
7	O-ring	FKM	1	1	1	1
8	stem packing	V, G, C, S, U	3	3	3	3
9	gland ring	316	1	1	1	1
10	bevel washer	304	3	3	3	3
11	hex nut	304	4	4	8	12
12	bolt washer	304	4	4	8	12
13	nut	304	2	2	2	2
14	bolt	304	4	4	n/a	n/a
14A	bolt (double thread)	304	n/a	n/a	4	6
15	handle	304 / Vinyl	1	n/a	n/a	n/a
15A	handle (rod)	304 / Vinyl	n/a	1	1	1
15B	handle head	304	n/a	1	1	1
15C	handle nut	304	n/a	1	1	1
16	stop pin	316	1	1	1	1
17	body seal	V, G, C, S, U	2	2	2	2

Note: We stock 1.5" and 2" Teflon Ball & Repair Kits

www.sanitarysolutions.com

Sanitary Solutions Inc. 1-888-909-3569 or 1-855-640-7871

Prices are subject to change without notice; please call before you quote