



# Figure # 5071PP

Polypropylene Ball Valve

### Product Features

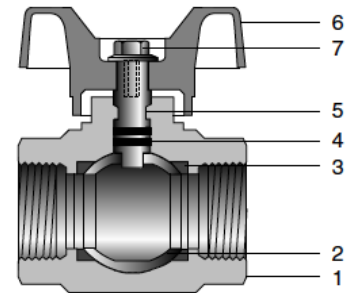
- 200# WOG
- Full Port
- One Piece Body
- PTFE Seats
- Blow-Out Proof Stem
- Wing or Lever Handle
- Screwed Ends



### Materials & Specifications

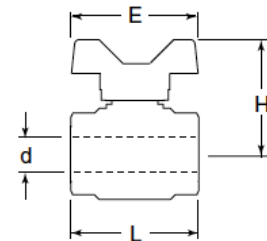
Item	Description	Material	Specification
1	Body	Polypropylene*	
2	Ball	Chrom plated forged brass	A283 C37700
3	Seat	PTFE	
4	O-ring	NBR	
5	Stem	Brass rod	A283 C37700
6	Wing handle (1/2" - 1)	PA6-30G	
	Lever handle (1-1/4" - 2")	Aluminum	
7	Bolt	Dacromet plated steel	A36

\* With ultra-violet prohibitor and 30% of glassfiber



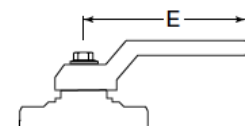
### Dimensions, Weights (inches-lbs.) & Valve Data

Size	1/2	3/4	1	1-1/4	1-1/2	2
L	2.41	2.84	3.28	3.86	4.21	5.16
H	2.10	2.25	2.81	2.99	3.86	4.21
E	3.11	3.11	3.19	4.72	5.91	5.91
d	0.59	0.77	1.01	1.26	1.58	2.01
Wt	0.26	0.40	0.66	1.08	1.65	2.93



### Cv Value (USgal/min)

Size	1/2	3/4	1	1-1/4	1-1/2	2
	15	30	60	110	130	360



Handle construction for sizes 1-1/4" to 2"

### RED-WHITE VALVE CORP.

20600 Regency Lane, Lake Forest, CA 92630

TEL: 949.859.1010 • FAX: 949.859.7200 • www.redwhitevalvecorp.com