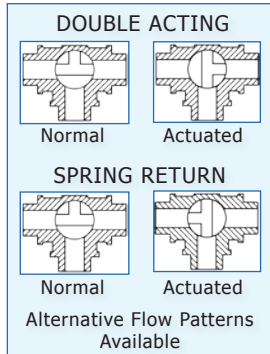
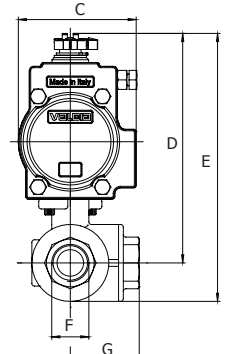
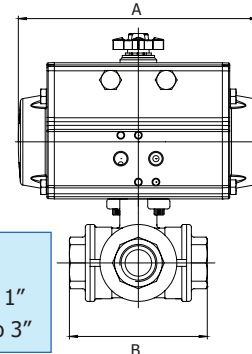


- 8P0139 (T)** - 955N Direct Mount, 3-way Stainless Steel, "T" **Std.** Port Ball Valve with "DA" Pneumatic Actuator
- 8P0141 (T)** - 955N Direct Mount, 3-way Stainless Steel, "T" **Std.** Port Ball Valve with "SR" Pneumatic Actuator
- 8P0140 (L)** - 965N Direct Mount, 3-way Stainless Steel, "L" **Std.** Port Ball Valve with "DA" Pneumatic Actuator
- 8P0142 (L)** - 965N Direct Mount, 3-way Stainless Steel, "L" **Std.** Port Ball Valve with "SR" Pneumatic Actuator



Pressure Ratings
1000PSI WOG - 1/4" to 1"
800PSI WOG - 1 1/4" to 3"



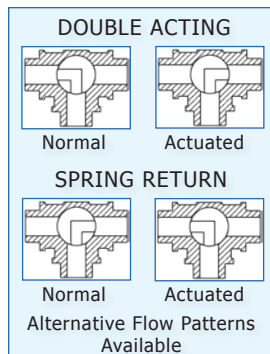
- 8P0139 (T)** 955N Std. "T" Port Ball Valve with **DOUBLE ACTING** Actuator
- 8P0140 (L)** 965N Std. "L" Port Ball Valve with **DOUBLE ACTING** Actuator

- 8P0141 (T)** 955N Std. "T" Port Ball Valve with **SPRING RETURN** Actuator
- 8P0142 (L)** 965N Std. "L" Port Ball Valve with **SPRING RETURN** Actuator

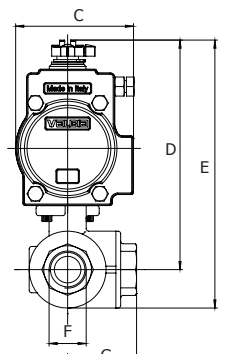
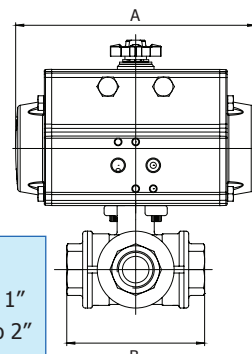
Size	A	B	C	D	E	F	G	Act DA	Wt Lbs
1/2"	5.55	2.83	2.80	5.45	6.23	0.47	1.41	52	4.2
3/4"	5.55	3.26	2.80	5.65	6.56	0.59	1.63	52	6.5
1"	6.46	3.89	3.17	6.10	7.20	0.78	1.94	63	8.1
1-1/4"	6.46	4.40	3.17	6.63	7.96	0.98	2.20	63	12.8
1-1/2"	8.27	4.92	3.72	7.64	9.17	1.25	2.46	75	18.9
2"	9.47	5.86	4.17	8.59	10.47	1.49	2.93	85	31.9
2-1/2"	10.83	6.69	4.84	C/F	C/F	1.96	3.34	100	35
3"	13.11	7.68	5.39	C/F	C/F	2.55	3.83	115	55

Size	A	B	C	D	E	F	G	Act SR	Wt Lbs
1/2"	6.46	2.83	3.17	5.90	6.68	0.47	1.41	63	5.9
3/4"	6.46	3.26	3.17	6.10	7.01	0.59	1.63	63	10.2
1"	8.27	3.89	3.72	6.81	7.91	0.78	1.94	75	11.8
1-1/4"	8.27	4.40	3.72	7.34	8.67	0.98	2.20	75	21.7
1-1/2"	10.83	4.92	4.84	8.69	10.22	1.25	2.46	100	25.9
2"	10.83	5.86	4.84	9.09	10.97	1.49	2.93	100	50.7
2-1/2"	17.13	6.69	6.46	C/F	C/F	1.96	3.34	140	70
3"	19.69	7.68	7.32	C/F	C/F	2.55	3.83	160	100

- 8P0143 (T)** - 956N Direct Mount, 3-way Stainless Steel, "T" **Full** Port Ball Valve with "DA" Pneumatic Actuator
- 8P0145 (T)** - 956N Direct Mount, 3-way Stainless Steel, "T" **Full** Port Ball Valve with "SR" Pneumatic Actuator
- 8P0144 (L)** - 966N Direct Mount, 3-way Stainless Steel, "L" **Full** Port Ball Valve with "DA" Pneumatic Actuator
- 8P0146 (L)** - 966N Direct Mount, 3-way Stainless Steel, "L" **Full** Port Ball Valve with "SR" Pneumatic Actuator



Pressure Ratings
1000PSI WOG - 1/4" to 1"
800PSI WOG - 1 1/4" to 2"



- 8P0143 (T)** 956N Full "T" Port Ball Valve with **DOUBLE ACTING** Actuator
- 8P0144 (L)** 966N Full "L" Port Ball Valve with **DOUBLE ACTING** Actuator

- 8P0145 (T)** 956N Full "T" Port Ball Valve with **SPRING RETURN** Actuator
- 8P0146 (L)** 966N Full "L" Port Ball Valve with **SPRING RETURN** Actuator

Size	A	B	C	D	E	F	G	Act DA	Wt Lbs
1/4"	5.55	2.83	2.80	5.45	6.23	0.43	1.41	52	3.7
3/8"	5.55	2.83	2.80	5.45	6.23	0.47	1.41	52	3.7
1/2"	5.55	3.26	2.80	5.65	6.56	0.59	1.63	52	4.2
3/4"	6.46	3.89	3.17	6.10	7.20	0.78	1.94	63	6.5
1"	6.46	4.40	3.17	6.63	7.96	0.98	2.20	63	8.1
1-1/4"	8.27	4.92	3.72	7.64	9.17	1.25	2.46	75	12.8
1-1/2"	9.47	5.86	4.17	8.59	10.47	1.49	2.93	85	18.9
2"	10.83	6.85	4.84	9.84	12.20	1.96	3.42	100	31.9

Size	A	B	C	D	E	F	G	Act SR	Wt Lbs
1/4"	6.46	2.83	3.17	5.90	6.66	0.43	1.41	63	5.5
3/8"	6.46	2.83	3.17	5.90	6.68	0.47	1.41	63	5.4
1/2"	6.46	3.26	3.17	6.10	7.01	0.59	1.63	63	5.9
3/4"	8.27	3.89	3.72	6.81	7.91	0.78	1.94	75	10.2
1"	8.27	4.40	3.72	7.34	8.67	0.98	2.20	75	11.8
1-1/4"	10.83	4.92	4.84	8.69	10.22	1.25	2.46	100	21.7
1-1/2"	10.83	5.86	4.84	9.09	10.97	1.49	2.93	100	25.9
2"	14.65	6.85	5.83	11.68	14.04	1.96	3.42	125	50.7