



JOB NAME:	CONTRACTOR:
JOB LOCATION:	APPROVAL:
ENGINEER:	CONTRACTOR P.O.:
APPROVAL:	REPRESENTATIVE:

M8E064-00*

250N DIRECT MOUNT, 2-WAY BRASS, FULL PORT BALL VALVE W METAL ELECTRIC ACTUATOR SIZES 1/4" TO 4"

M8E068-00*

253N DIRECT MOUNT, 2-WAY BRASS, S/S BALL & STEM FULL PORT BALL VALVE W METAL ELECTRIC ACTUATOR SIZES 1/4" TO 2"

*001	12V AC/DC	*002	24V AC/DC	*003	100-240V AC
01	BATTERY BACKUP	*02*	POSITIONER	*04*	BATTERY BACKUP W POSITIONER

SPECIFICATIONS

Bonomi North America series M8E064 brass automated ball valve package features a rugged NEMA 4 metal housing and a full port 600 psi brass ball valve.

The electric actuator is loaded with extras such as: either a dual 100-240VAC or a 24AC/DC motor, a 12VDC option, two additional limit switches, a heatER/thermostat, dome position indicator, dual ISO patterns, 75% duty cycle, 1/2" conduit connections and more.

The valve is the 250N or 253N, brass full port, low torque, with double O-ring stem seals for maximum temperature fluctuation protection. The 250N comes in sizes 1/4" - 4", and the 253N in sizes 1/4" - 2". The valve series also incorporates a four point ISO pad with a square stem for direct mounting.

The M8E064 series package can be mounted either vertically or horizontally without the damage to the stem area.

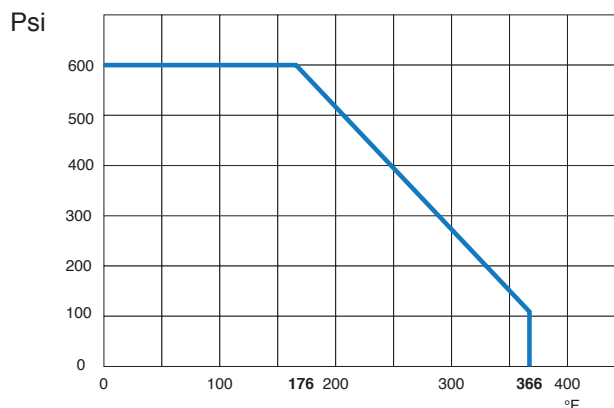
ACTUATOR FEATURES

- Dual Voltages
- 24V AC/DC and 100-240V AC Models Available
- ISO 5211, F03/F05 base with 11mm female drive
- 75% Duty Cycle
- Anti-condensation heater, (when red wire is connected to power)
- High-Strength, Die Cast Aluminum Powder Coated Housing
- Temperature Range -4°F to 131°F
- NEMA 4 Housing
- Two Auxiliary Switches Standard
- Torque limiter standard

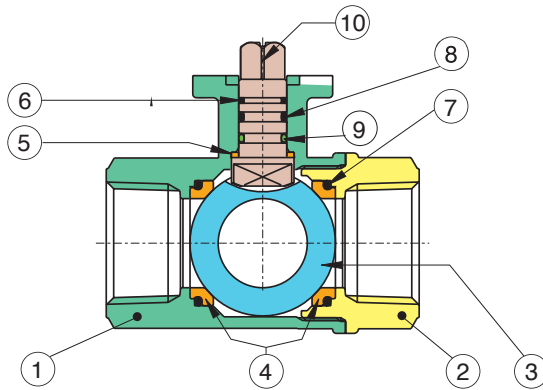
VALVE FEATURES

- 250N - Brass w/ Chrome Plated Ball & Stem
- 253N - Brass w/ Stainless Steel Ball & Stem
- Full Port, Sizes 1/4" to 1-1/4"
- ISO 5211 pad and square stem
- Pressure rating to 600 WOG
- Temperature range -4°F to 366°F
- Low torque design with back up O-ring seats
- Double O-ring stem seal design for extended cycle life
- 100% electronically tested in the open and closed position@80 Psi

PRESSURE - TEMPERATURE CHART FOR SERIES 250N

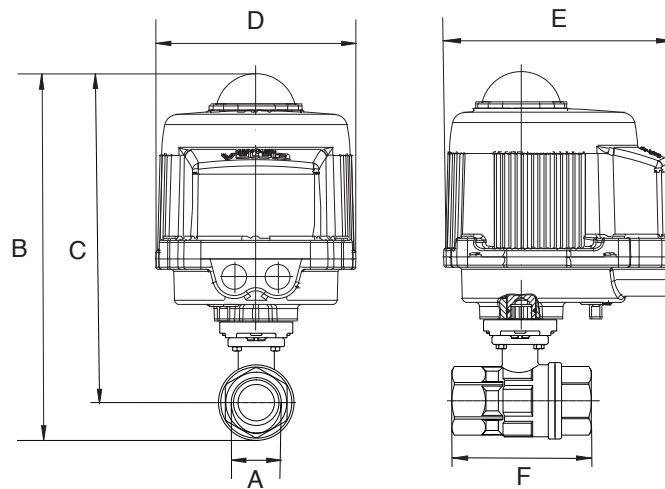


BILL OF MATERIALS FOR 250N



N POS	PART NAME	MATERIAL	N PCS
1	BODY	BRASS C38000	1
2	END CONNECTION	BRASS C38000	1
3	BALL	SS316	1
4	BALL SEAT	P.T.F.E.	2
5	THRUST WASHER	P.T.F.E.	1
6	STEM SEAL	P.T.F.E.	1
7	O-RING	FKM (Viton®)	2
8	O-RING	EPDM	1
9	O-RING	FKM (Viton®)	1
10	STEM	BRASS C38000	1

DIMENSIONS

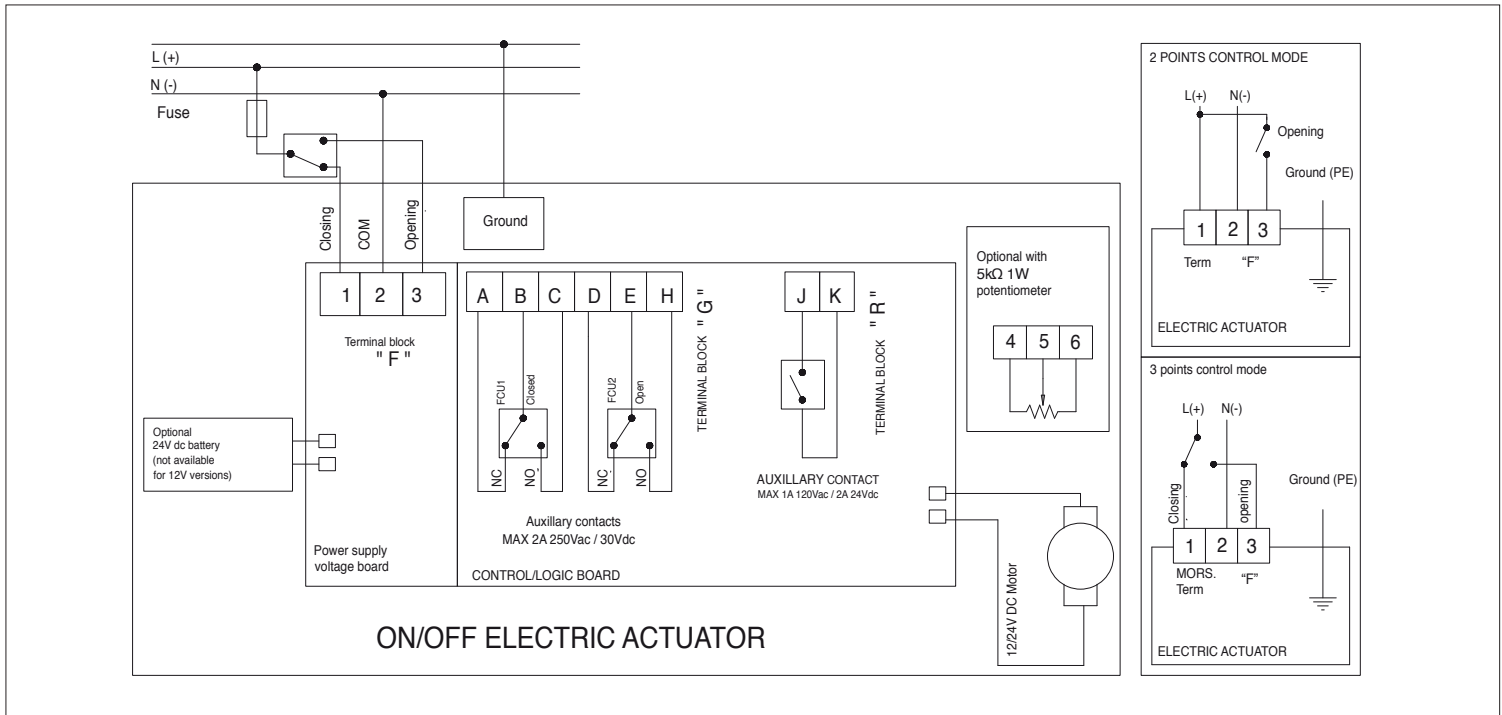


Size	A	B	C	D	E	F	ACT.
1/4"	.250	9.77	9.09	6.34	7.36	2.64	VB030M
3/8"	.375	9.77	9.09	6.34	7.36	2.64	VB030M
1/2"	.500	9.77	9.09	6.34	7.36	2.64	VB030M
3/4"	.750	9.97	9.25	6.34	7.36	2.99	VB030M
1"	1.00	10.59	9.65	6.34	7.36	3.35	VB030M
1-1/4"	1.25	10.91	9.9	6.34	7.36	3.66	VB030M
1-1/2"	1.50	11.79	10.47	6.34	7.36	1.13	VB030M
2"	2.00	12.51	11.00	6.34	7.36	4.80	VB030M
2-1/2"*	2.50	14.39	12.56	6.93	7.76	6.10	VB060M
3"*	3.00	15.20	13.18	6.93	7.76	6.89	VB060M
4"*	4.00	17.54	15.13	10.47	10.63	8.03	VB110M

* 250N Sizes Only

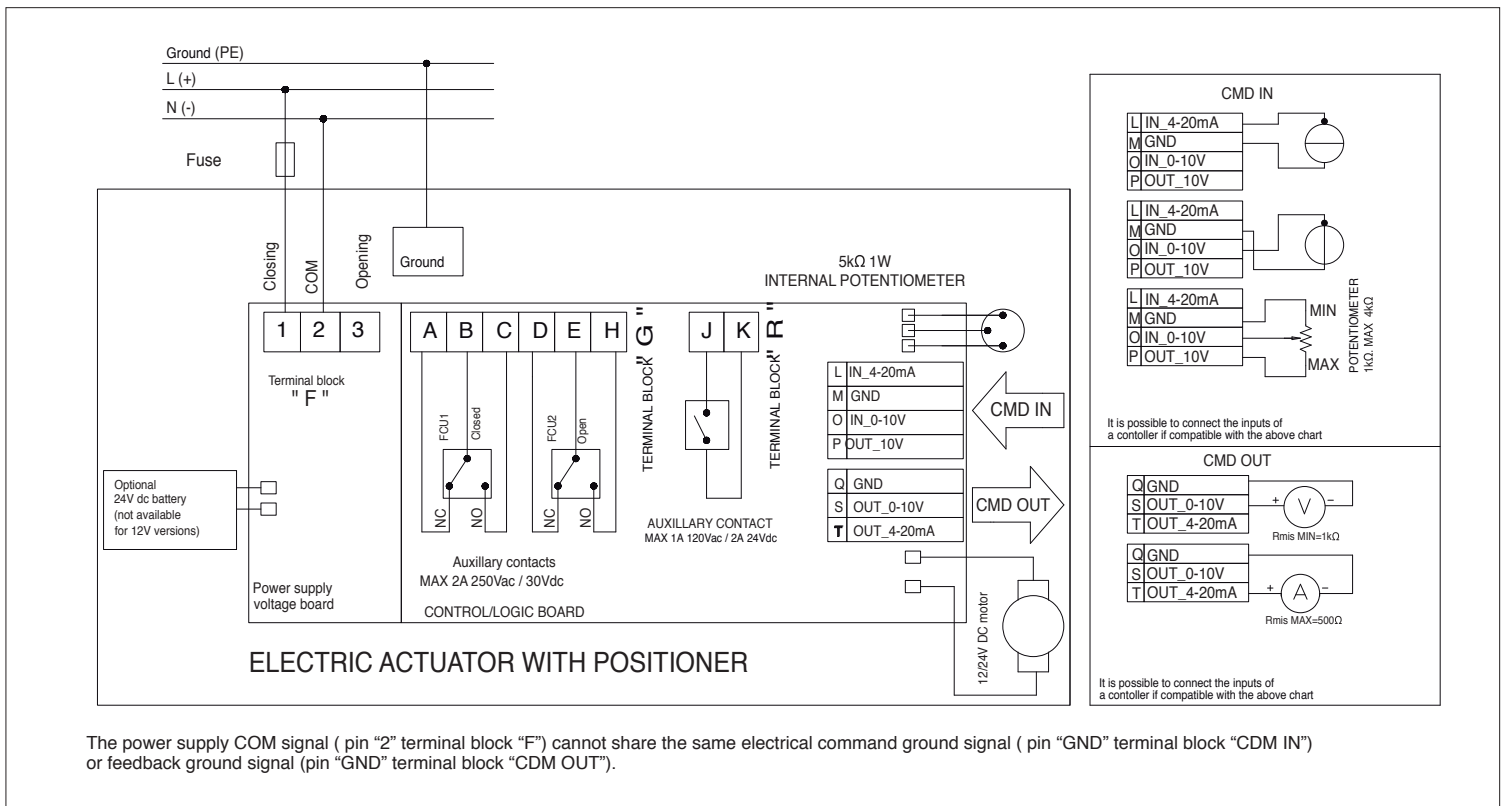
ON/OFF WIRING DIAGRAM - VB030M -VB110M

12V AC/DC, 24V AC/DC & 100-240VAC



POSITIONER WIRING DIAGRAM - VB030M -VB110M

12V AC/DC, 24V AC/DC & 100-240VAC



The power supply COM signal (pin "2" terminal block "F") cannot share the same electrical command ground signal (pin "GND" terminal block "CDM IN") or feedback ground signal (pin "GND" terminal block "CDM OUT").