

## 1/8" NPT Stainless Steel Body 2-Way Direct Acting Normally Closed



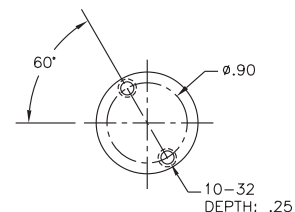
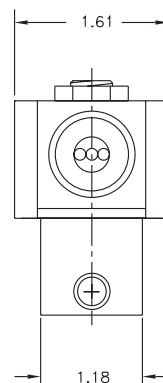
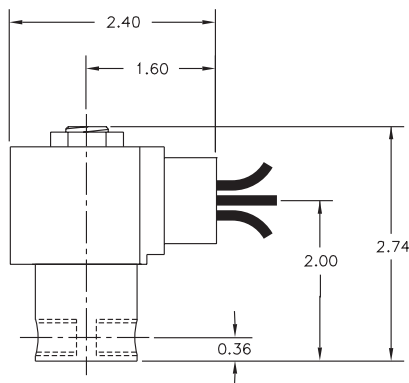
Materials	Seals:	Nitrile, Viton®, Ethylene Propylene, Teflon®, Rulon
	Orifice:	Stainless Steel
Electrical	Standard Housing:	Encapsulated Waterproof Conduit (NEMA 4/4X)
	Optional Housings:	Metallic Conduit, Explosion-proof (NEMA 7), Grommet, Open Frame, Junction Box (single or dual knockouts), DIN; Contact GC Valves Customer Service for others.
	Standard Voltages:	24, 120, 240 AC 60 Hz; 50 Hz available 6, 12, 24 DC; Contact GC Valves Customer Service for Additional Voltages.
	Voltage Tolerance:	±10% of applicable voltage
	Coil Classes:	F, H, N
	Standard Lead Length:	24 inch
Operating Temperature	Ambient (Nominal):	32°F to 125°F
Mounting	Position:	Any
Approvals*	Agency:	UL Safety Shutoff, UL Listed, UL Recognized, CSA Approved, FM Certified

\* Not available for all variations

© Registered Trademark of DuPont Co.

### Dimensions/Weight

**Weight (lbs.)**  
0.9



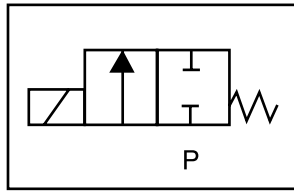
GC Valves Customer Service: 800-828-0484 (7:30am to 4pm ET) or 800-582-4232 (7:30am to 4pm PT)



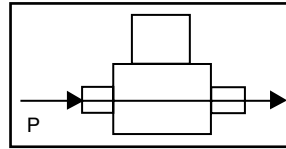
# S311 – 1/8" NPT, Stainless Steel Body, Normally Closed

## Valve Selection List

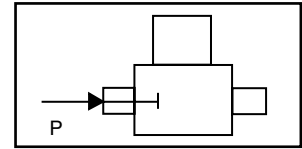
Normally Closed



Energized



De-Energized



Pipe Size NPT	Orifice Size in.	C <sub>v</sub>	Minimum	Operating Pressure Differential (psi)								Max Fluid Temp. °F	Seal Material	Power Consumption (Watts)		Model Code (120V/60HZ — 110V/50HZ Shown)
				Maximum										AC	DC	
				Air/Gas		Water		Light Oil		Steam*						
				AC	DC	AC	DC	AC	DC	AC	DC			AC	DC	Stainless Steel Body
1/8	1/32	.03	0	2000	2000	2000	2000	—	—	150*	150*	295	EPR	8	9	S311GF02C2AC1
	3/64	.05	0	770	420	770	420	—	—	150*	150*	295	EPR	8	9	S311GF02C2AC3
	1/16	.10	0	560	185	560	185	—	—	150*	150*	295	EPR	8	9	S311GF02C2AC5
	5/64	.15	0	400	150	400	150	—	—	150*	150*	295	EPR	8	9	S311GF02C2AC7
	3/32	.21	0	300	130	300	130	—	—	150*	130*	295	EPR	8	9	S311GF02C2AC9
	7/64	.29	0	210	90	210	90	—	—	150*	90*	295	EPR	8	9	S311GF02C2AD3
	1/8	.32	0	155	60	155	60	—	—	150*	60*	295	EPR	8	9	S311GF02C2AD5
	5/32	.43	0	105	35	105	35	—	—	105*	35*	295	EPR	8	9	S311GF02C2AD7
3/16	.49	0	75	20	75	20	—	—	75*	20*	295	EPR	8	9	S311GF02C2AE1	
1/8	1/32	.03	0	2000	2000	2000	2000	2000	2000	—	—	180	Nitrile	8	9	S311GF02N2AC1
	3/64	.05	0	770	420	770	420	770	420	—	—	180	Nitrile	8	9	S311GF02N2AC3
	1/16	.10	0	560	185	560	185	560	185	—	—	180	Nitrile	8	9	S311GF02N2AC5
	5/94	.15	0	400	150	400	150	400	150	—	—	180	Nitrile	8	9	S311GF02N2AC7
	3/32	.21	0	300	130	300	130	300	130	—	—	180	Nitrile	8	9	S311GF02N2AC9
	7/64	.14	0	210	90	210	90	210	90	—	—	180	Nitrile	8	9	S311GF02N2AD3
	1/8	.32	0	155	60	155	60	155	60	—	—	180	Nitrile	8	9	S311GF02N2AD5
	5/32	.43	0	105	35	105	35	105	35	—	—	180	Nitrile	8	9	S311GF02N2AD7
3/16	.49	0	75	20	75	20	75	20	—	—	180	Nitrile	8	9	S311GF02N2AE1	
1/8	1/32	.03	0	2000	2000	2000	2000	2000	2000	—	—	230	Viton	8	9	S311GF02V2AC1
	3/64	.05	0	770	420	770	420	770	420	—	—	230	Viton	8	9	S311GF02V2AC3
	1/16	.10	0	560	185	560	185	560	185	—	—	230	Viton	8	9	S311GF02V2AC5
	5/64	.15	0	400	150	400	150	400	150	—	—	230	Viton	8	9	S311GF02V2AC7
	3/32	.21	0	300	130	300	130	300	130	—	—	230	Viton	8	9	S311GF02V2AC9
	7/64	.29	0	210	90	210	90	210	90	—	—	230	Viton	8	9	S311GF02V2AD3
	1/8	.32	0	155	60	155	60	155	60	—	—	230	Viton	8	9	S311GF02V2AD5
	5/32	.43	0	105	35	105	35	105	35	—	—	230	Viton	8	9	S311GF02V2AD7
3/16	.49	0	75	20	75	20	75	20	—	—	230	Viton	8	9	S311GF02V2AE1	

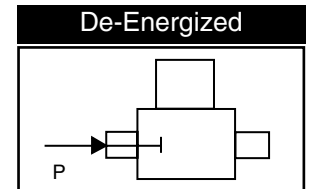
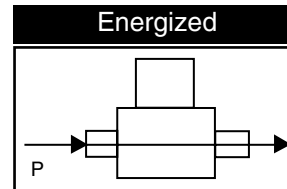
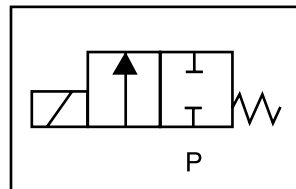
\* Class H Coil Recommended for Steam and Other High Temperature Applications

# S311 – 1/8" NPT, Stainless Steel Body, Normally Closed



## Valve Selection List

Normally Closed



Pipe Size NPT	Orifice Size in.	C <sub>v</sub>	Minimum	Operating Pressure Differential (psi)								Max Fluid Temp. °F	Seal Material	Power Consumption (Watts)		Model Code (120V/60HZ — 110V/50HZ) Shown
				Maximum										AC	DC	
				Air/Gas		Water		Light Oil		Steam*						
				AC	DC	AC	DC	AC	DC	AC	DC			AC	DC	
1/8	1/32	.03	0	2000	2000	2000	2000	2000	2000	150*	150*	366	Rulon	8	9	S311GF02R2AC1
	3/64	.05	0	770	420	770	420	770	420	150*	150*	366	Rulon	8	9	S311GF02R2AC3
	1/16	.10	0	560	185	560	185	560	185	150*	150*	366	Rulon	8	9	S311GF02R2AC5
	5/64	.15	0	400	150	400	150	400	150	150*	150*	366	Rulon	8	9	S311GF02R2AC7
	3/32	.21	0	300	130	300	130	300	130	150*	130*	366	Rulon	8	9	S311GF02R2AC9
	7/64	.29	0	210	90	210	90	210	90	150*	90*	366	Rulon	8	9	S311GF02R2AD3
	1/8	.32	0	155	60	155	60	155	60	150*	60*	366	Rulon	8	9	S311GF02R2AD5
	5/32	.43	0	105	35	105	35	105	35	105*	35*	366	Rulon	8	9	S311GF02R2AD7
	3/16	.49	0	75	20	75	20	75	20	75*	20*	366	Rulon	8	9	S311GF02R2AE1
1/8	1/32	.03	0	2000	2000	2000	2000	2000	2000	150*	150*	366	Teflon	8	9	S311GF02T2AC1
	3/64	.05	0	770	420	770	420	770	420	150*	150*	366	Teflon	8	9	S311GF02T2AC3
	1/16	.10	0	560	185	560	185	560	185	150*	150*	366	Teflon	8	9	S311GF02T2AC5
	5/64	.15	0	400	150	400	150	400	150	150*	150*	366	Teflon	8	9	S311GF02T2AC7
	3/32	.21	0	300	130	300	130	300	130	150*	130*	366	Teflon	8	9	S311GF02T2AC9
	7/64	.29	0	210	90	210	90	210	90	150*	90*	366	Teflon	8	9	S311GF02T2AD3
	1/8	.32	0	155	60	155	60	155	60	150*	60*	366	Teflon	8	9	S311GF02T2AD5
	5/32	.43	0	105	35	105	35	105	35	105*	35*	366	Teflon	8	9	S311GF02T2AD7
	3/16	.49	0	75	20	75	20	75	20	75*	20*	366	Teflon	8	9	S311GF02T2AE1

\* Class H Coil Recommended for Steam and Other High Temperature Applications



# S311 – 1/8" NPT, Stainless Steel, Normally Closed

## Part Numbering

1	2	3	4	5	6	7	8	9	10	11	12	13
<b>S</b>	<b>3</b>	<b>1</b>	<b>1</b>	<b>G</b>	<b>F</b>	<b>0</b>	<b>2</b>	<b>C</b>	<b>2</b>	<b>A</b>	<b>C</b>	<b>1</b>
Series			Operating Mode	Housing*	Coil Class*	Voltage*		Seal Material	Body Material	Pipe Connection	Orifice Size	
S31			1: Normally Closed	G: Conduit	F: Class F H: Class H	02: 120/60 110/50		C: EPR N: Nitrile V: Viton R: Rulon T: Teflon	2: Stainless Steel	A: 1/8" NPT	C1: 1/32" C3: 3/64" C5: 1/16" C9: 5/64" C9: 3/32" D3: 7/64" D5: 1/8" D7: 5/32" E1: 3/16"	
* See the "Engineering Guide" for additional voltages, variations and options.												

## Coil Data

Coil Family	
Type	Size
All	S3

Frequency (Hz)	60	50	
Nominal Power (VA)	Inrush	36	36
	Holding	13	14

GC Valves Customer Service: 800-828-0484 (7:30am to 4pm ET) or 800-582-4232 (7:30am to 4pm PT)